

Press-in sleeves

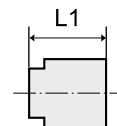
»blue series«

EASY

Press-in sleeve - can only be pressed into plastic

Art. No.	Type No.	For tube O.D. mm	L1 mm
109942	224.04	4	11.3
109943	224.06	6	11.9
109944	224.08	8	13.7
109945	224.10	10	15.2
109946	224.12	12	17.6

→ Only recommended for use in combination with quick connectors of the »Blue Series«.
Suitability testing for use with other series is the responsibility of the user.



224.06

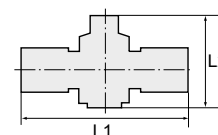
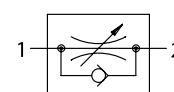
Unidirectional flow control valves with male thread and plug connection, straight type

»blue series«

EASY

Unidirectional flow control valve with parallel male thread and plug connection, straight type, air restriction from tube to port

Art. No.	Type No.	Thread	For tube O.D. mm	L1 mm	L2 mm	a/f mm
109947	183.018-4	G 1/8	4	46.5	28.9 - 31.2	12
109948	183.018-6	G 1/8	6	53.7	41.1 - 46.8	14
109949	183.018-8	G 1/8	8	58.1	41.7 - 47.4	14
109950	183.014-6	G 1/4	6	55.1	40.8 - 47.0	14
109951	183.014-8	G 1/4	8	59.6	44.8 - 50.8	17
109952	183.014-10	G 1/4	10	70.3	47.4 - 54.0	17
109953	183.014-12	G 1/4	12	80.6	50.3 - 55.3	21
109954	183.038-8	G 3/8	8	61.0	44.3 - 50.4	17
109955	183.038-10	G 3/8	10	71.6	48.5 - 55.3	20
109956	183.038-12	G 3/8	12	81.3	51.8 - 57.1	21
109957	183.012-10	G 1/2	10	76.0	48.3 - 54.5	19
109958	183.012-12	G 1/2	12	85.9	51.5 - 56.8	24



183.014-6

Unidirectional flow control valve with conical male thread and plug connection, straight type, air restriction from tube to port

Art. No.	Type No.	Thread	For tube O.D. mm	L1 mm	L2 mm	a/f mm
109959	182.018-4	R 1/8	4	45.9	26.9 - 29.0	10
109960	182.018-6	R 1/8	6	53.6	37.8 - 43.0	12
109961	182.018-8	R 1/8	8	58.4	41.5 - 47.2	14
109962	182.014-6	R 1/4	6	56.2	38.0 - 43.6	14
109963	182.014-8	R 1/4	8	60.6	41.1 - 47.1	14
109964	182.014-10	R 1/4	10	71.4	47.6 - 55.2	17
109965	182.014-12	R 1/4	12	82.3	51.8 - 55.6	21
109966	182.038-8	R 3/8	8	62.1	41.9 - 47.2	17
109967	182.038-10	R 3/8	10	71.8	48.3 - 54.9	17
109968	182.038-12	R 3/8	12	83.0	51.2 - 55.9	21
109969	182.012-10	R 1/2	10	75.4	48.0 - 54.6	21
109970	182.012-12	R 1/2	12	86.2	52.0 - 56.6	21



182.014-6

